



## Rabbit anti Villin 2/ezrin/p80 Polyclonal Antibody

Alternative Name(s): Villin-2; p81; Cytovillin 2

### Order Information

- **Description:** Villin 2/ezrin/p80
- **Catalogue:** 600-790
- **Lot:** See label
- **Size:** 100ug/200ul
- **Host:** Rabbit
- **Clone:** nan
- **Application:** IHC(P), WB
- **Reactivity:** Hu, Ms, Rt

### **ANTIGEN PREPARATION**

A synthetic peptide corresponding to the C-term portion of human Ezrin protein. This sequence is identical to human, rat, mouse, dog, Monkey, zebra fish, and human origins.

### **BACKGROUND**

Villin 2, also known as Ezrin, p81, 80K, or cytovillin, is a cytoplasmic peripheral membrane protein which is enriched in microvilli and other cell surface structures. Villin belongs to a member of the gelsolin family of calcium-regulated actin-binding proteins. Unlike the ubiquitously expressed gelsolin, villin expression is restricted to simple epithelia of the gastrointestinal and urogenital tracts. It is localized to the apical cytoplasm and brush borders of these cells. Villin functions in the regulation of actin dynamics in the apical epithelium, capping, nucleating and/or severing actin filaments in a calcium-dependent manner and regulating cell shape in response to external stimuli. Villin serves as a tyrosine kinase substrate, and is phosphorylated in EGF-stimulated cells. This protein plays a key role in cell surface structure adhesion, migration and organization, and it has been implicated in various human cancers.

### **PURIFICATION**

The Rabbit IgG is purified by Epitope Affinity Purification

### **FORMULATION**

This affinity purified antibody is supplied in sterile Phosphatebuffered saline (pH7.2) containing antibody stabilizer

### **SPECIFICITY**

This antibody recognizes ~90 kDa of Villin 2 protein. It reacts with human, mouse and rat. The other species are not tested.

### **STORAGE**

The antibodies are stable for 24 months from date of receipt when stored at -20oC to -70oC. The antibodies can be stored at 2oC-8oC for three month without detectable loss of activity. Avoid repeated freezing-thawing cycles.

### **APPLICATIONS/SUGGESTED WORKING DILUTIONS\***

- Western Blot: 0.1-1 µg/ml
- ELISA: 0.01-0.1 µg/ml
- Immunoprecipitation: 2-5 µg/ml
- IHC: 2-10 µg/ml
- Flow cytometry: Not tested
- Molecular Weight: 92.5
- Positive Control: Kidney Tissue
- Cellular Location: Cell Membrane

\*Optimal dilutions should be determined by researchers for the specific applications.

### **FOR RESEARCH USE ONLY.**

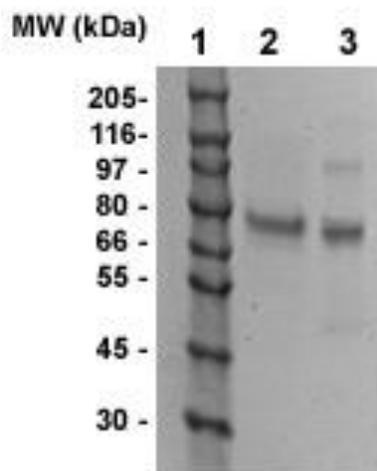
AbboMax, Inc 2528 Qume Drive, Suite 8, San Jose, California 95131, USA  
1 408-573-1898 (Tel). 1 408-573-1858 (Fax). [www.abbomax.com](http://www.abbomax.com) [info@abbomax.com](mailto:info@abbomax.com)



**FOR RESEARCH USE ONLY.**

AbboMax, Inc 2528 Qume Drive, Suite 8, San Jose, California 95131, USA  
1 408-573-1898 (Tel). 1 408-573-1858 (Fax). [www.abbomax.com](http://www.abbomax.com) [info@abbomax.com](mailto:info@abbomax.com)

## DATA ATTACHMENTS



Western Blot: The Cell lysate derived from Hela (lane 2) and HT-29 (Lane 3) were resolved onto 10% SDS-PAGE, transferred onto NC membrane, and immunoprobed by Rabbit anti Villin 2 antibody (Cat#600-790) at 1:500. An immunoreactive band around ~80 kDa was observed.

## REFERENCES

### FOR RESEARCH USE ONLY.

AbboMax, Inc 2528 Qume Drive, Suite 8, San Jose, California 95131, USA  
1 408-573-1898 (Tel). 1 408-573-1858 (Fax). [www.abbomax.com](http://www.abbomax.com) [info@abbomax.com](mailto:info@abbomax.com)